



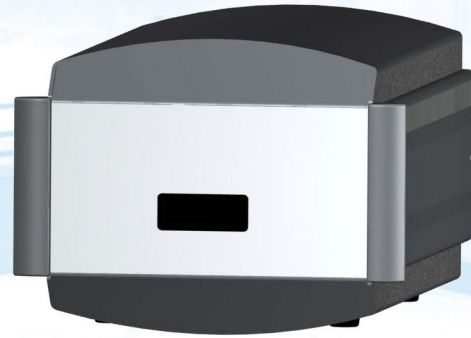
WWW.DESIGNA.COM

INTEGRATED SOLUTIONS

## MANUAL PAY SYSTEM

Manual Pay Station for calculating parking fees and issuing various types of tickets.

- Tariff calculation incl. discount processing
- Renewal and additional payment of season parker cards
- Charging and additional payment of debit cards
- Issuing and payment of prepaid tickets
- Issuing of lost tickets
- Issuing of replacement tickets
- Shift report after shift change
- External display and keyboard
- External receipt printer for issuing receipts using thermal printing technology
- Ethernet connection



### Basis equipment

Magnetic card reader for processing PM ABACUS side strip tickets

Wire matrix printer for printing car park data, payment time and ticket number on inexpensive uncoated paper tickets

Terminal Control Computer LCC with LINUX<sup>®</sup> operating system, with passive cooling, wear-free storage medium and MPS application

Ethernet connection for communication with the data control centre (LAN, WAN (VPN), WLAN)

External LCD, 2x20 characters, backlit

External receipt printer for issuing receipts using thermal printing technology

Keyboard

External power supply unit

Function cards for authorised staff

Linear, progressive and degressive rate structure

### Options

External customer display

Magnetic card reader for processing PM ABACUS central strip tickets in all 4 insertion directions in order to minimise operating errors and optimise throughput

Cash-free payment of parking fee by credit cards, ec-cards

Cash-free payment via contact chip-based cards (electronic purse, e.g. SmartCard, Quick Card)

Installation of customised card readers

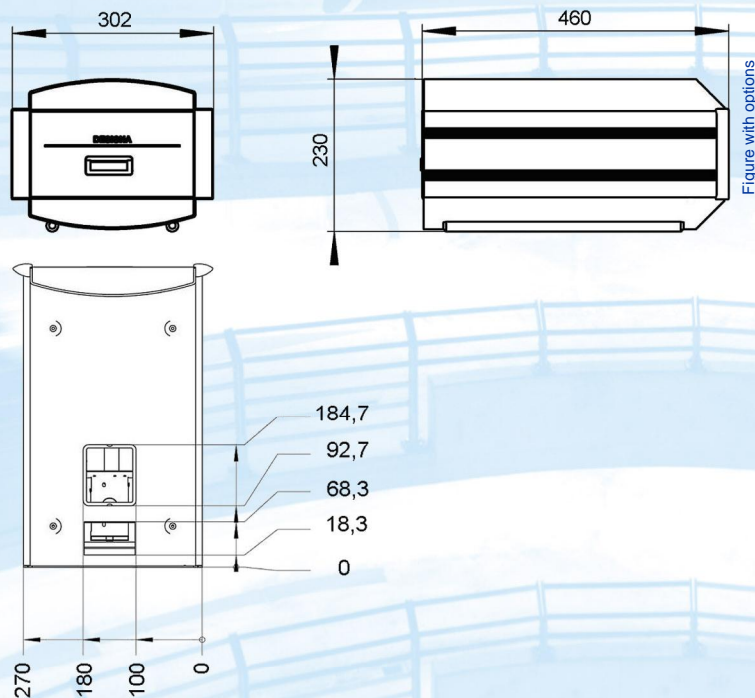
Value/time cheque processing

Processing of magnetically coded discounts

Hotel ticket function: recodes short term parker tickets as congress tickets with special rate

EasyMove for the renewal, additional payment or charging of hands-free season parker cards and debit cards

## MANUAL PAY SYSTEM



### Options

Multi-application capable smart card system (RFID) ISO 15693, ISO 14443, Mifare or Legic for the identification of hands-free season parker cards and debit cards during renewal, additional payment or charging

Manual payment processing at exit via direct barrier control (separate interface)

Ticket insertion from belt

Report printer for all payment processes

Intercom device: Integrated in the casing

External cash drawer

Surge voltage device protection

Uninterruptible power supply

### Cable lengths

MPS ⇔ display:	2 m
MPS ⇔ customer display:	2 m
MPS ⇔ receipt printer:	1 m
MPS ⇔ ext. contact chip-based card reader:	2 m
Display ⇔ keyboard:	2 m
Receipt printer ⇔ cash drawer:	1.3 m

### Design

Casing:	aluminium, anodised
Front panel:	aluminium, anodised
Cover/base:	plastic (light grey)

### Technical data

Power supply:	24 V DC; via external power supply unit
External power supply unit:	100-240 V AC 47/63 Hz
Power consumption:	100 W
Weight:	approx. 8 kg
Dimensions:	see figure
Casing	142x132x199 mm (WxHxD)
Receipt printer:	244x40x162 mm (WxHxD)
Keyboard:	235x98x89 mm (WxHxD)
Display:	235x98x89 mm (WxHxD)